

Justification:
Safety Instruction
(Maintenance)

**Private Owner
Circular Letter
638 Issue 2**

This document is the property of
Network Rail.

It shall not be reproduced in
whole or in part, nor disclosed to
a third party, without the written
permission of the Owner.

© Copyright 2009 Network Rail.

Title

**Axles supplied by
SMR Romania**

AUTHORISATION

Authorised by:



.....
J. Collinson, Head of Traction and Rolling Stock Engineering

1. **INTRODUCTION**

POCL 638, Issue 2 'Axles supplied by SMR Romania' has been produced, to allow Owners (with the prior agreement of the Senior PWRA Engineer) to use alternative, temporary detection methods on axles assembled into wheelset to allow them to be put back into service for a limited time.

In accordance with the instruction contained in POCL 638, Issue 1, all axles supplied by SMR Romania shall have already been identified and removed from wagons.

2. **INSTRUCTION**

Any axle supplied from SMR Romania could potentially have been weld repaired during manufacture. If axles supplied by SMR Romania are to be considered for service then it shall be confirmed that they have not been subject to weld repair. This shall be in accordance with either of the two methods detailed within this document.

Note: The commonly used methods to inspect axles (i.e. UAT, MPI or conventional Eddy Current Testing) are not considered adequate to detect weld repairs of this nature.

If weld repairs are evident the axle shall be cut in two to prevent re-use.

2.1 **Visual inspection to confirm axles are free of weld repairs.**

- a). Remove wheels and axlebearings from the axle.
- b). Ensure that all traces of paint and primer are removed from the axle body.
- c). Lightly buff/polish the axle body surface, without removing material.
- d). Coat the axle with a 10% to 15% Nital solution (to etch the surface).
- e). Visually inspect the axle (welded repairs will appear as per Figure 1).
- f). If weld repairs are evident the axle shall be cut in two to prevent re-use.
- g). For axles exhibiting no weld repairs again lightly buff/polish the axle body surface to remove any remaining Nital solution residue.
- h). Record details of the inspection, including axle serial number, date of inspection, location and name of inspector.
- i). Ensure that axles put into storage are adequately protected from corrosion and when re-assembled into a wheelset the painted surfaces are restored.

- 2.2 Temporary, alternative methods to allow assembled wheelsets to be returned to service
With the prior agreement (in writing) of the Senior PWRA Engineer, alternative methods that ensure axles confirmed to be clear of weld repairs (between the wheelseats) may be used. In this way axles already assembled into wheelsets can be returned to service for a limited time.

After the time agreed, the wheelset is to be removed from the wagon, the wheels and axle bearings removed and the axle subjected to a full inspection regime.

3. **RECORDS**

Owners shall retain all records of axles inspected and confirmed to be free of weld repairs.

4. **SCOPE**

This POCL is applicable to all axles supplied from SMR Romania where Owners wish to return the axles to service.

5. **IMPLEMENTATION**

This POCL shall be implemented immediately.

In the event of any query arising, or clarification required, please contact:

Senior PWRA Engineer
PWRA Management Group
Room 207 Derwent House
rtc Business Park
London Road
Derby
DE24 8UP

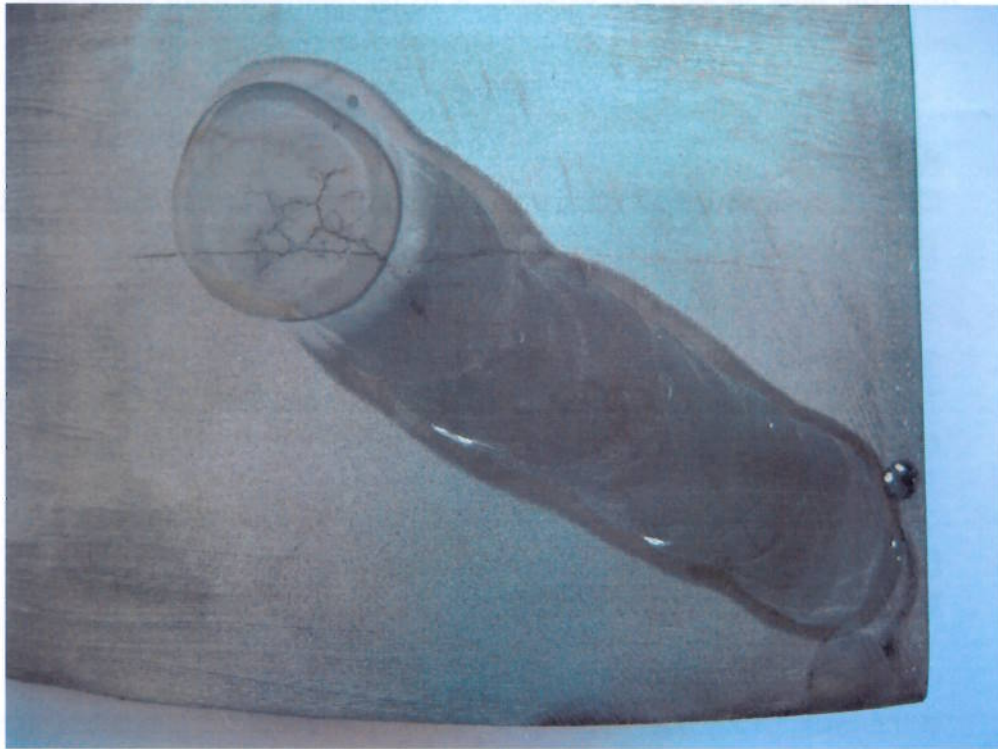


Figure 1 Typical appearance of a weld repair on an axle