

PO/CL 406
INSTRUCTION

SUPERSEDES PO/CL 261
PO/CL 267
PO/CL 332
PO/CL 401

CHIEF MECHANICAL & ELECTRICAL ENGINEER
BRITISH RAILWAYS BOARD
14 MELBURY TERRACE
LONDON NW1 6JU.

REF: RDF 172-9-2

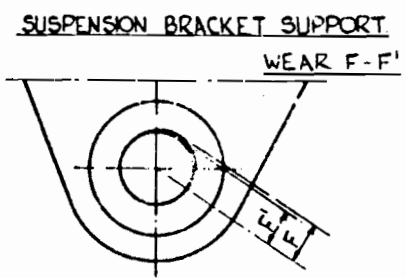
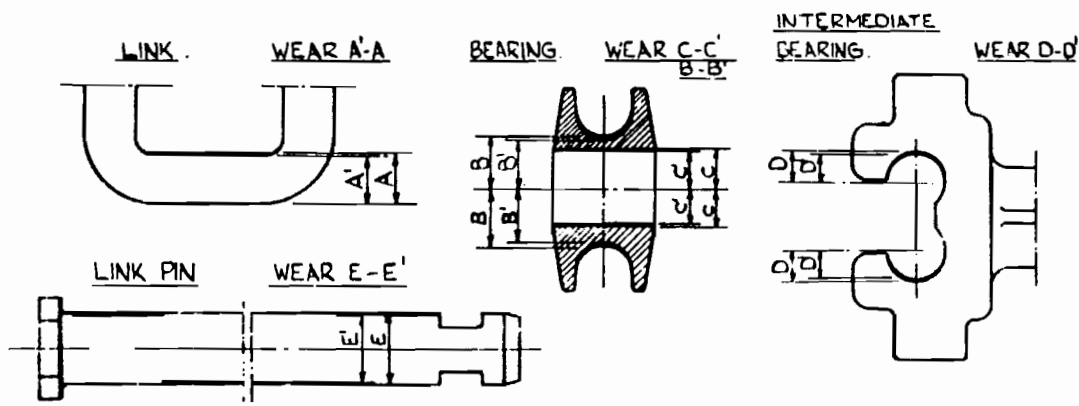
DATE: 14 JUN 1974

U.I.C. TYPE DOUBLE-LINK SUSPENSION
LIMITS OF WEAR

It has been mutually agreed that the revised limits of wear on the components of U.I.C. Type Double-Link suspension on British owned wagons, whether in internal or international service, shall be as shown on the attached Drawing Number R.C.H. 3130 Issue 'C', and that components worn to these limits must be replaced.

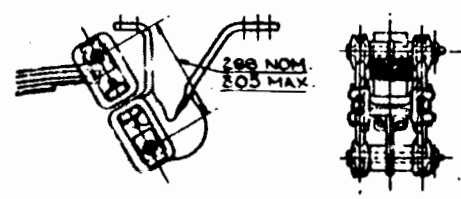


For G.S.W. CALDER



LIMIT OF WEAR TO SUSPENSION DETAILS		
DETAILS	POSITION OF WEAR	LIMIT OF WEAR
LINK	A - A'	1 MM.
BEARING	: GROOVE	B - B'
	: PIN HOLE	C - C'
INTERMEDIATE BEARING	: GROOVE	D - D'
PIN	E - E'	3 MM
SUSPENSION BRACKET SUPPORT	F - F'	2 MM

CENTRE OF PIN IN THE SUSPENSION BRACKET TO THE CENTRE OF THE PIN IN THE SPRING EYE NOT TO EXCEED 15 MM OF TOTAL WEAR WITH ALL PARTS ASSEMBLED.



DOUBLE LINK SUSPENSION ASSY

ISSUE LETTER	DATE	REF	AMENDMENTS
A	3/3/64		REDRAWN IN ACCORDANCE WITH UIC LEAFLET 517 PLATE III
B	21/7/65		DOUBLE LINK SUSPENSION ASSEMBLY: 288 NOM 303 MAX. ALTERED TO 288 NOM 303 MAX. IN ACCORDANCE WITH UIC LEAFLET 517, PLATE III, 4TH EDITION, ISSUED 1/1/65.
C	7/9/70		BEARING, LIMIT OF WEAR B-B' & C-C' ADDED TO BOTTOM GROOVE & TO BOTTOM OF PIN HOLE RESPECTIVELY.

DOUBLE LINK SUSPENSION LIMITS OF WEAR MAX. ALLOWANCE.

DATE: MARCH 1964

DRG.No.: RCH 3130 c