

PO/CL.397

Supersedes PO/CL.330

INSTRUCTION

Chief Mechanical &
Electrical Engineer,
British Railways Board,
14 Melbury Terrace,
LONDON NW1 6JU.

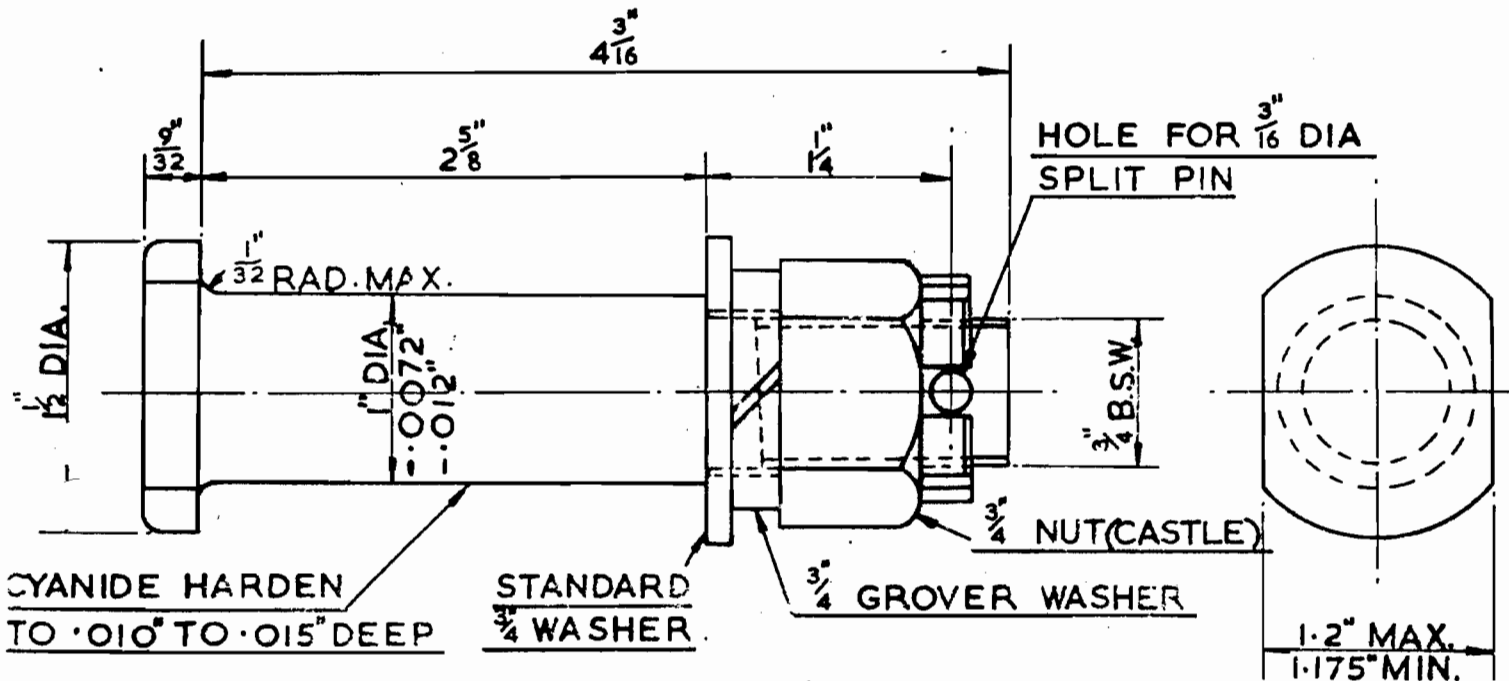
Ref : RDF.172-9-2

Date:

23 NOV 1973

100 TON TANK WAGONS : BRAKE GEAR SPLIT PINS

It has been reported recently that a number of instances have arisen of shearing of the split pins securing the brake block hanger pins on the earlier builds of 100 ton Tank Wagons. To assist in overcoming this difficulty, when new bolts are required, owners are requested to ensure that, on both top and bottom positions, the block hanger links are secured by means of a shouldered bolt fitted with castle nut and washers as shown below :-



NOTE:- DIMENSIONS SHOWN ARE TYPICAL AND MAY BE VARIED TO SUIT PARTICULAR APPLICATIONS

C. Simpson
for G. S. W. Calder,